



YAMAHA RAPTOR 700 NERF BAR INSTALL INSTRUCTIONS

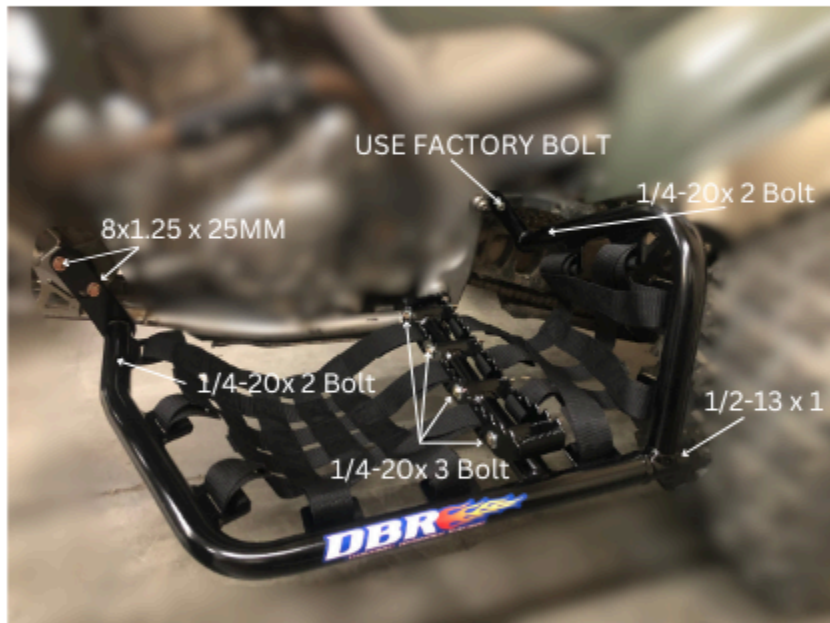


These should be installed by a qualified mechanic with proper tools.

Drill 3 holes using a 17/64 Drill Bit
where the 3 - 1/4-20 x 2 arrows point to.

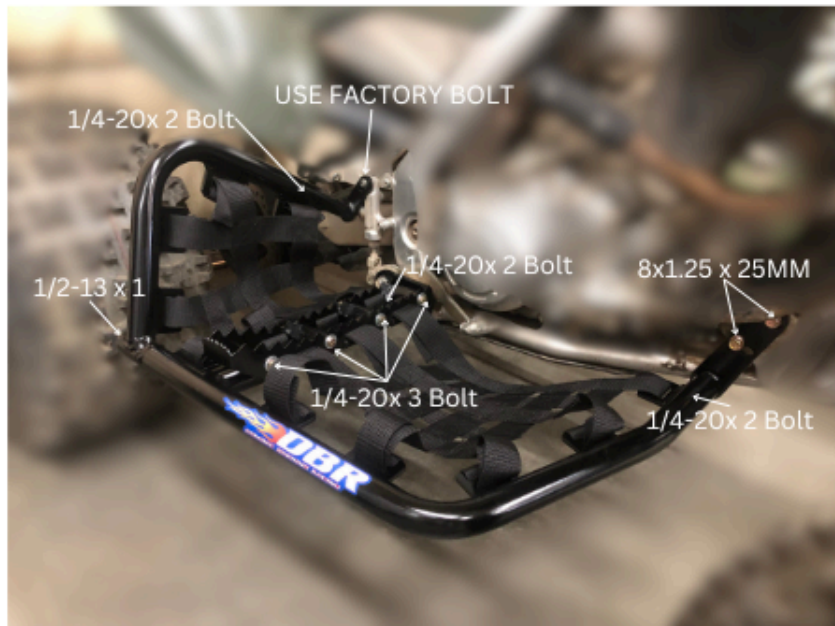
Use the 3 supplied bolts and tighten to 11 ft. lbs repeat this step on
opposite side.

Continue to next page.



Using an Anti-Seize type product apply some to the 1/2-13 Socket Head Cap Screw Tighten to 26ft. lbs.

Tip: It is always best to leave everything loose until you get everything in place.



Shifter Side
Nerf Mount



Brake Pedal
Side Nerf Mount



Shifter Side
Heel Mount



Brake Side
Heel Mount



Front
Mount x 2



1/4-20 x 3
Gr8 Bolts x8



1/4-20 x 2
Gr8 Bolts x6

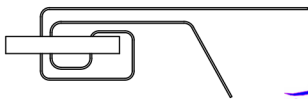
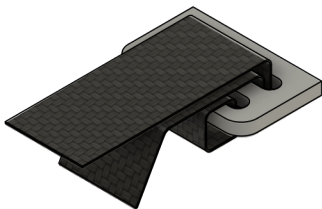


1/2-13 x 1
SHCS x2



8x1.25mm
x 25mm x4





THANK YOU FOR YOUR PURCHASE
OF DBR NERF BARS!
WE PRIDE OURSELVES IN TOP
QUALITY PRODUCTS AND OUR NETS
ARE SECOND TO NONE!

THIS DRAWING SHOWS HOW TO
INSTALL OUR NETS.



	PROJECT DBR				
	TITLE Net Install Instructions				
APPROVED	SIZE A	CODE	DWG NO	REV	
CHECKED					
DRAWN	Chris Borning	6/14/2024	SCALE 1:1	WEIGHT	SHEET 1/1